



# OPERATING & ASSEMBLY INSTRUCTION

## NAC3FPX-TOP & NAC3FPX-WOT-TOP

### powerCON® TRUE1 TOP | APPLIANCE OUTLET

#### OPERATING INSTRUCTION

##### Application:

The powerCON TRUE1 system is certified as a connector with breaking capacity according IEC 60320, VDE 0625. It is intended for use as an appliance coupler and interconnection coupler. It serves to supply power to an appliance and from an appliance to other equipment. To be installed by qualified person only.

##### CONNECTOR ASSIGNMENT:

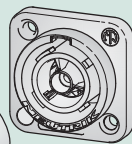
###### APPLIANCE INLET

NAC3MPX-TOP  
NAC3MPX-WOT-TOP  
**Power IN** ▶



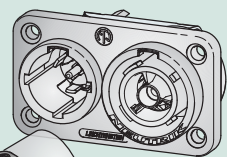
###### APPLIANCE OUTLET

NAC3FPX-TOP  
NAC3FPX-WOT-TOP  
NAC3FPX-ST-TOP  
**Power OUT** ◀



###### APPLIANCE INLET / OUTLET ▶ Combination

NAC3PX-TOP  
**Power IN** ▶



**Power OUT** ◀

NAC3FX-W-TOP  
(Connector)

NAC3MX-W-TOP  
(Plug connector)

NAC3FX-W-TOP  
(Connector)

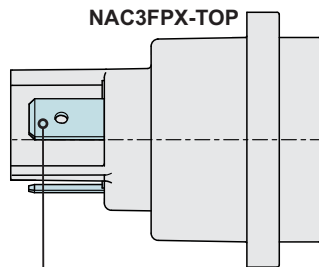
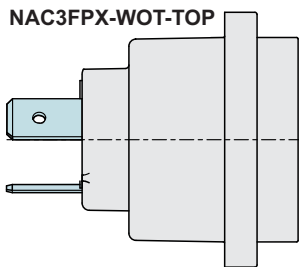
NAC3MX-W-TOP  
(Plug connector)

powerCON TRUE1 TOP line is full backward compatible with the preceding powerCON TRUE1 products.

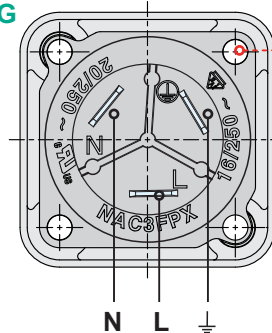
##### UL50E environmental rating

Enclosure Type 4 when installed with sealing cover SCNAC-FPX and cover closed or when mated with attachment plug NAC3MX-W-TOP.

#### ASSEMBLY INSTRUCTION



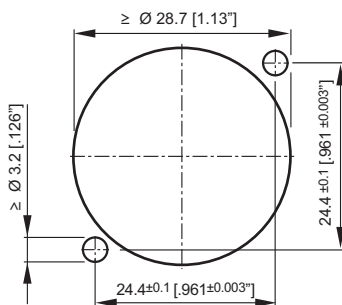
##### WIRING



**Attention:**  
Tightening torque  
 $M_A = 40 \text{ Ncm}$ .

Flat tabs for FASTON®  
6.35 mm x 0.8 mm  
(1/4" x 0.03")

##### Panel Cutout (Rear Side)



Find more details of powerCON TRUE1 TOP on [www.neutrik.com](http://www.neutrik.com).