



Silicone Flex Glass

Silicone Coated Fiberglass Sleeving Grade A & C

SILICONE FLEX GLASS (SG) sleeving is engineered with a silicone rubber coating over an insulating fiberglass sleeve. SG is very abrasion resistant and is ideal in heavy duty applications that require outstanding mechanical and electrical properties.

The mechanical properties and high dielectric strength of SG make it the first choice in applications such as transformer lead protection, motor coil leads, component isolation, and power supply wiring.

SG has a high tear strength, slight expandability for easy installation, excellent flex life and resistance to fatigue. It is Class H rated (392°F) with an operating temperature range of -103°F to 428°F. SG shows no discernible effects under exposure of up to 10 megarads of radiation.

- **Rated to 392°F Class H (200°C)**
- **Grade A (7,000 V) Mil-I-3190/6**
- **Grade C (2,500 V)**
- **Cut-Through and Abrasion Resistant**
- **Excellent Low Temp. Flexibility**
- **Resists Inorganic Acids, Alkalis, and Aliphatic Hydrocarbons**



Silicone Flex Glass is ideal for use on high voltage power supplies in precision test equipment.

Nominal Size	Diameter	Part #	Grade	Available Colors	Part #	Grade	Available Colors	Standard Spool Put-Ups	
								Bulk Spool	Shop Spool
24	0.022"	SGAG.24	A	WH, BK, NT	SGCG.24	C	WH & NT	500'	250'
22	0.027"	SGAG.22	A	WH, BK, NT	SGCG.22	C	WH & NT	500'	250'
20	0.034"	SGAG.20	A	WH, BK, NT	SGCG.20	C	WH & NT	500'	250'
18	0.042"	SGAG.18	A	WH, BK, NT	SGCG.18	C	WH & NT	500'	250'
16	0.053"	SGAG.16	A	WH, BK, NT	SGCG.16	C	WH & NT	500'	250'
14	0.066"	SGAG.14	A	WH, BK, NT	SGCG.14	C	WH & NT	500'	250'
12	0.085"	SGAG.12	A	WH, BK, NT	SGCG.12	C	WH & NT	250'	100'
10	0.106"	SGAG.10	A	WH, BK, NT	SGCG.10	C	WH & NT	250'	100'
9	0.118"	SGAG.09	A	WH, BK, NT	SGCG.09	C	WH & NT	250'	100'
8	0.133"	SGAG.08	A	WH, BK, NT	SGCG.08	C	WH & NT	250'	100'
7	0.148"	SGAG.07	A	WH, BK, NT	SGCG.07	C	WH & NT	250'	100'
6	0.166"	SGAG.06	A	WH, BK, NT	SGCG.06	C	WH & NT	125'	25'
5	0.186"	SGAG.05	A	WH, BK, NT	SGCG.05	C	WH & NT	125'	25'
4	0.208"	SGAG.04	A	WH, BK, NT	SGCG.04	C	WH & NT	125'	25'
3	0.234"	SGAG.03	A	WH, BK, NT	SGCG.03	C	WH & NT	125'	25'
2	0.263"	SGAG.02	A	WH, BK, NT	SGCG.02	C	WH & NT	50'	25'
1	0.294"	SGAG.01	A	WH, BK, NT	SGCG.01	C	WH & NT	50'	25'
0	0.330"	SGAG.00	A	WH, BK, NT	SGCG.00	C	WH & NT	50'	25'
3/8"	0.375"	SGA0.38	A	WH, BK, NT	SGC0.38	C	WH & NT	50'	25'
7/16"	0.438"	SGA0.44	A	WH, BK, NT	SGC0.44	C	WH & NT	50'	25'
1/2"	0.500"	SGA0.50	A	WH, BK, NT	SGC0.50	C	WH & NT	50'	25'
5/8"	0.625"	SGA0.63	A	WH, BK, NT	SGC0.63	C	WH & NT	50'	25'
3/4"	0.750"	SGA0.75	A	WH, BK, NT	SGC0.75	C	WH & NT	50'	25'
7/8"	0.875"	SGA0.88	A	WH, BK, NT	SGC0.88	C	WH & NT	50'	25'
1"	1.000"	SGA1.00	A	WH, BK, NT	SGC1.00	C	WH & NT	50'	25'





SILICONE FLEX GLASS

- **Rated to 200°C Class H**
- **UL Recognized**
- **Grade A (7,000 V) Mil_I-3190/6**
- **Grade C (2,500 V)**
- **Cut and Abrasion Resistant**
- **Excellent Low Temp. Flexibility**

Silicone Coated Fiberglass Sleeving Grade A & C

SILICONE FLEX GLASS (SG) sleeving is engineered with a silicone rubber coating over an insulating fiberglass sleeve. SG is very abrasion resistant and is ideal in heavy duty applications that require outstanding mechanical and electrical properties.

The mechanical properties and high dielectric strength of SG make it the first choice in applications such as transformer lead protection, motor coil leads, component isolation, and power supply wiring.

SG has a high tear strength, slight expandability for easy installation, excellent flex life and resistance to fatigue. It is Class H rated (392°F) with an operating temperature range of -103°F to 428°F. SG shows no discernible effects under exposure of up to 10 megarads of radiation.

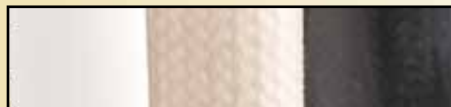


Cut Cleanly
Scissors

Material
Silicone Coated Fiberglass

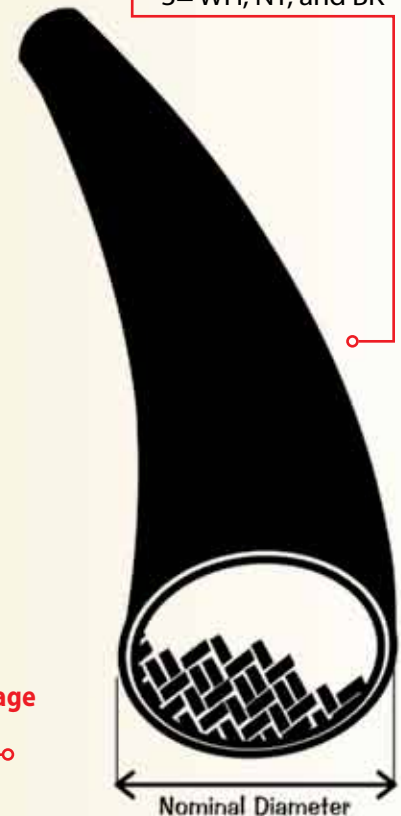
Grade
A & C

Colors Available:



White (WH), Natural (NT), and Black (BK).

■ **Colors Available:**
3= WH, NT, and BK



■ **Silicone Flex Glass is ideal for use on high voltage power supplies in precision test equipment.**





SILICONE FLEX GLASS

Nominal Size	Diameter	Part#	Grade	Available Colors	Part#	Grade	Available Colors	Put-Ups	
								Bulk Spool	Shop Spool
24	0.022"	SGAG.24	A	WH, BK, NT	SGCG.24	C	WH & NT	500'	250'
22	0.027"	SGAG.22	A	WH, BK, NT	SGCG.22	C	WH & NT	500'	250'
20	0.034"	SGAG.20	A	WH, BK, NT	SGCG.20	C	WH & NT	500'	250'
18	0.042"	SGAG.18	A	WH, BK, NT	SGCG.18	C	WH & NT	500'	250'
16	0.053"	SGAG.16	A	WH, BK, NT	SGCG.16	C	WH & NT	500'	250'
14	0.066"	SGAG.14	A	WH, BK, NT	SGCG.14	C	WH & NT	500'	250'
12	0.085"	SGAG.12	A	WH, BK, NT	SGCG.12	C	WH & NT	250'	100'
10	0.106"	SGAG.10	A	WH, BK, NT	SGCG.10	C	WH & NT	250'	100'
9	0.118"	SGAG.09	A	WH, BK, NT	SGCG.09	C	WH & NT	250'	100'
8	0.133"	SGAG.08	A	WH, BK, NT	SGCG.08	C	WH & NT	250'	100'
7	0.148"	SGAG.07	A	WH, BK, NT	SGCG.07	C	WH & NT	250'	100'
6	0.166"	SGAG.06	A	WH, BK, NT	SGCG.06	C	WH & NT	125'	25'
5	0.186"	SGAG.05	A	WH, BK, NT	SGCG.05	C	WH & NT	125'	25'
4	0.208"	SGAG.04	A	WH, BK, NT	SGCG.04	C	WH & NT	125'	25'
3	0.234"	SGAG.03	A	WH, BK, NT	SGCG.03	C	WH & NT	125'	25'
2	0.263"	SGAG.02	A	WH, BK, NT	SGCG.02	C	WH & NT	50'	25'
1	0.294"	SGAG.01	A	WH, BK, NT	SGCG.01	C	WH & NT	50'	25'
0	0.330"	SGAG.00	A	WH, BK, NT	SGCG.00	C	WH & NT	50'	25'
3/8"	0.375"	SGA0.38	A	WH, BK, NT	SGC0.38	C	WH & NT	50'	25'
7/16"	0.438"	SGA0.44	A	WH, BK, NT	SGC0.44	C	WH & NT	50'	25'
1/2"	0.500"	SGA0.50	A	WH, BK, NT	SGC0.50	C	WH & NT	50'	25'
5/8"	0.625"	SGA0.63	A	WH, BK, NT	SGC0.63	C	WH & NT	50'	25'
3/4"	0.750"	SGA0.75	A	WH, BK, NT	SGC0.75	C	WH & NT	50'	25'
7/8"	0.875"	SGA0.88	A	WH, BK, NT	SGC0.88	C	WH & NT	50'	25'
1"	1.000"	SGA1.00	A	WH, BK, NT	SGC1.00	C	WH & NT	50'	25'

www.techflex.com

CHEMICAL RESISTANCE

Resists inorganic acids, alkalis and aliphatic hydrocarbons.

LOW TEMPERATURE

-75°C/-103°F to 220°C/428°F